

TITAN HOOKLOADERS

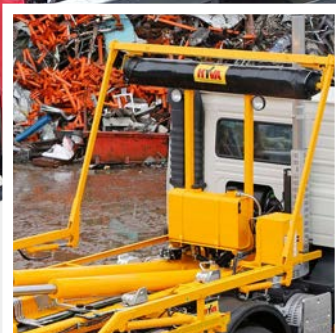
Hyva Titan hookloaders. The

Hyva for Titan Hookloaders

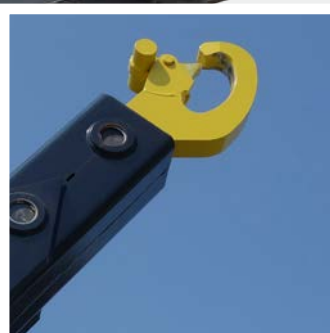
For out and out versatility in handling bulk waste, nothing really beats a hookloader. Being able to drop and recover all sizes and types of containers in almost any operating environment gives hookloaders a huge operating advantage.

And to use the truck as a conventional tipper too. Whether employed on waste and landfill, demolition, with demount bodies by local authorities or moving hazardous industrial refuse, the hookloader is the true 'All in One' solution.

Hyva's range of hookloaders covers everything from lightweight 3.5 tonnes van chassis cabs right through to 32 tonnes gvw eight wheelers. As with all Hyva equipment, our hookloaders are strong, robust, durable and inherently safe to use. Of advanced design and built with premium specification materials, Hyva hookloaders also maximise their payload potential.



Full specification includes Autosheet



Integral safety latch hook (optional)



Heavy duty piston rods



Container handling is smooth and safe

'All in One' waste handling solution

FEAURES

- Full range of models with lift capacities from 5 to 23 tonnes (suitable for chassis from 3.5 to 32 tonnes gvw).
- Easy handling of all container lengths from 3850 to 6500mm.
- In-cab pneumatic controls of hydraulic system for maximum reliability in all conditions.
- All models built from high tensile steel to maximise strength, reliability and payload capacity.
- Low installation heights to optimise vehicle handling and stability.
- 26 and 32 tonnes gvw models feature larger 90mm piston rods, a heavy duty lifting frame and rear hinge as well as optimised rollers and guides for smooth loading and unloading.
- High angles of tipping.
- Fast, easy to use Hyva Autosheet system (with width adjustable option).
- Multiple driver-friendly health and safety features.
- Industry-leading warranty (3 years for all fabricated structural items on 26 and 32 tonnes gvw models).
- Wide range of options including drawbar packages, on-board weighing, tool boxes, extra lighting, reversing cameras, audible warning systems and finished painting.



RANGE

Hookloaders for trucks 3.5 - 17t gvw

GVW	HYVALIFT MODEL	LIFTING CAPACITY tonnes	EQUIPMENT WEIGHT kgs	TIPPING ANGLE mm	INSTALLATION HEIGHT mm	EQUIPMENT LENGTH mm	CONTAINER LENGTH mm	CHEM STANDARD
3.5	3 - 32	3.5	550	46	150	3230	3860	TS13 N
7.5	5 - 32	5	580	45	150	3230	3560	TS13 N
7.5 - 10	6 - 37	6	860	57	240	3780	4270	TS13 N&L
13	8 - 37	8	1070	57	240	3780	4270	TS13 N&L
15 - 17	10 - 45	10	1800	50	260	4365	5300	TS18 16

Hookloaders for trucks 18t - 32t gvw / 44t gtw

GVW/GTW	HYVALIFT MODEL	LIFTING CAPACITY tonnes	EQUIPMENT WEIGHT kgs	TIPPING ANGLE mm	INSTALLATION HEIGHT mm	EQUIPMENT LENGTH mm	CONTAINER LENGTH mm	CHEM STANDARD
18 - 20	14 - 45	14	1800	50	260	4365	5300	TS8 16
18 - 20	14 - 45	14	1950	50	260	5500	6400	TS8 20
26	26	20	2500	48	280	5400	6400	TS8 20
32/44	32	23	2950	45	280	5600	6500	TS8 20

TITAN HOOKLOADER



BOLT IT ALL ACCESSORIES

The new Titan features a line of accessories that can be bolted straight onto the hookloader. No more searching for space on the chassis or leaving out comfort functionalities with a Titan. The specially designed brackets can hold a wide variety of accessories from toolboxes to fenders.



EASY MOUNTING

The Titan series offers an easy way of mounting. Joining the hookloader to the truck with a chassis specific mounting kit achieves repeatable quality time and time again. Hyva prides itself in creating chassis specific kits for every chassis.



COMBI LOCK IT ALL

Fit your Titan with the combi-lock and gain the ability to lock every container to your system. Proven hydraulic locking securing your load every time. One lock for both outside and inside locking.



FEATURES



FACTORY END COAT

Coated in a highly corrosion resistant end coat, the Titan will stand the test of time. Standard coated in sleek black end coat from the factory. With the option to be coated in any colour, as long as there is a RAL code for it.



CONTROL IT YOUR WAY

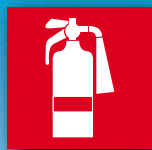
Select one of the many options for controlling your Titan. Select the operators' favourite pneumatic control or go with the more advanced electric system.



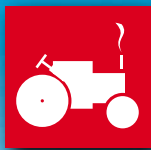
ROBUST

Unparalleled standard of hardness and toughness achieved by using combined abrasive resistant floor plates with Lifetime High quality Anti Corrosion Painting which offers an increased protection and pre-serves the resale value.

SEGMENTS FOR HOOKLOADER USE



FIRE FIGHTING



AGRICULTURE



WASTE
HANDLING



RECYCLING



MUNICIPALITY



CONSTRUCTION





TRUST OUR SERVICE. OVER 25,000 CUSTOMERS DO SO **EVERY DAY.**

Count on us to be there for you when you need us. Our international sales and after-sales teams from our own subsidiaries are exceptionally experienced, and a vast network of service partners and dealers provide world-class customer support through our Hyva approved service workshops.

Our unwavering confidence in our products allows us to offer the best possible guarantees on every purchase. And our maintenance contracts are customised, with highly cost-efficient repair and maintenance contracts. After all, we're in this for the long haul.



Key Facts :

- The best warranty in our industry
- Widest Global Hyva Service coverage
- Parts Availability
- Quick and Reliable Support

130 countries
+3,000 employees
25,000 customers
37 subsidiaries
12 production facilities



Hyva is a leading provider of innovative and highly efficient transport solutions for commercial vehicles used in transport, construction, mining, materials handling and environmental service industries.

Founded in 1979 in the Netherlands, the company has a global presence with 37 fully owned subsidiaries, extraordinary service coverage and 12 manufacturing facilities in Brazil, China, Europe and India.

For more information on Hyva, please visit www.hyva.com

or follow us on:



HYVA UK LTD.
Unit 2 Prince Mead Place
Trafford Park
Manchester M17 1PN
United Kingdom
Telephone: +44 (0)161-77 66 600
info@hyva.com
www.hyva.com



ISO 9001 • ISO 14001
**Quality and
environmental certified**

DEALER STAMP